



General Services Report

WWW.ADDERSUP.IO

In **ADDERS UP** We develop cutting-edge technological tools to enable our customers to transform their organizations and adapt them easily and simply to the 21st century.

TARGET

Digitize and automate 100% of business processes.

We take an in-depth look at each company's logic to create an ecosystem of customized digital tools best suited to its uniqueness, enabling it to automate 100% of its processes and drastically reduce operational costs. Our motto: "Digital technology should serve the business, not the other way around".

PURPOSE

Achieve unlimited scalability for our customers' businesses.

Not depending on human resources means that our customers' businesses can work 24/7, completely autonomously and without limits. This translates into UNLIMITED business scalability.

PRAGMATISM

100% automatic, real-time integration with any software.

Automatic integration with any type of system means that our customer can continue to operate without having to sacrifice their current management system. This ease of use means that deployment of ADDERS UP technology solutions is extremely fast and efficient, requiring no training or adaptation process.

AT THE TECHNOLOGICAL VANGUARD

Integration enables our customers to benefit from the best software on the market IN REAL TIME.

Real-time integration with the customer's existing system and third-party software (such as banks, agencies, governments) means that our customer is always at the cutting edge of technology, thanks to the use of tools that are automatically updated by the suppliers themselves.



We design and develop applications for IOS/ANDROID

Available on APP Store / Google Play

MAIN FEATURES OF ADDERS UP APP'S



The customers of our customers demand MOBILE SOLUTIONS that enable them to interact with businesses 24/7, quickly, securely and stably. The aim of ADDERS UP applications is to enable customers to get what they're looking for "in no more than 3 clicks."

APP'S IMPLEMENTATION DIAGRAM - IOS/ANDROID

App Store & Google Play

PHASES 1

Design, development and implementation of APPS

- We analyze our customers' business logic in detail.
- We develop the interface, the IOS/Android/ Web backend and all the automations best suited to the uniqueness of our customer's business. ADHOC Design.
- We create real-time integration with the customer's management system. O, we develop a new management system for the customer.
- Our customer is automatically up and running 24 hours a day, 7 days a week..



PHASES 2

Permanent support service

- Permanent support service.
- R&D department Constant updates and new add-on modules: AI, Automa.

In a world over-saturated with offers, the companies that succeed are those that provide added value and differentiation.

That's why the first step for ADDERS UP is to understand our customers' business logic in depth, so that we can provide them with the best APP on the market, enabling them to become the undisputed leader in their sector.

WE DEVELOP AUTOMATIC INTEGRATIONS WITH ANY SOFTWARE ON THE MARKET:

Integration means connecting and combining different systems, applications and/or technology platforms so that they work together in a coordinated way, enabling data exchange and process automation.

Main characteristics

Unlimited company scalability

The integrations enable 100% AUTOMATION, eliminating dependence on human resources and enabling our customer to grow in an unlimited way.

Constant updates

As we are integrated in real time, we always use the latest update of the integrated software.

Practice

The customer continues to use his software: NEVER BE SACRIFICED.

Competitive

Our R&D department is constantly researching the best tools on the market and making them available to our customers. Extreme cost reduction.

Cost savings

We deploy very quickly, and the customer doesn't need to go through an adaptation or migration process.

Security and privacy

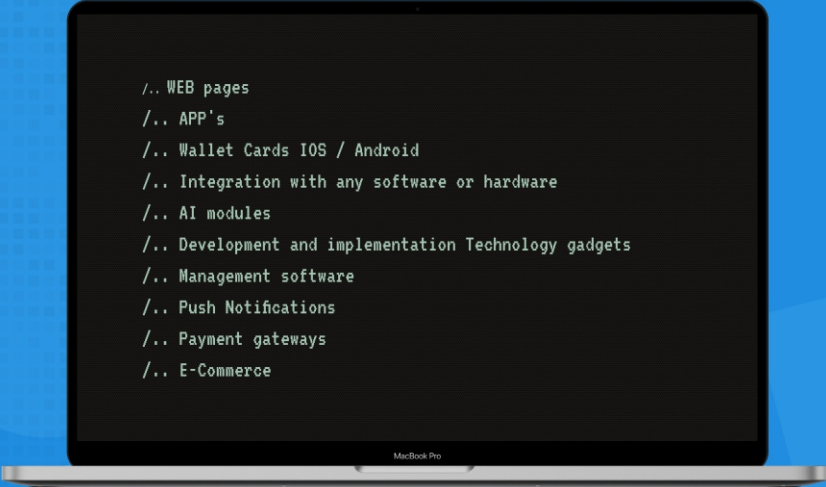
The system acts as a protective barrier in the event of a cyber-attack.

Automation

We integrate with any accounting, banking or government platform, automating 100% of processes.

At ADDERS UP, we create and develop any digital tool the customer needs in a totally personalized way.

We meet all our customers' technological needs.



```
../.. WEB pages
../.. APP's
../.. Wallet Cards IOS / Android
../.. Integration with any software or hardware
../.. AI modules
../.. Development and implementation Technology gadgets
../.. Management software
../.. Push Notifications
../.. Payment gateways
../.. E-Commerce
```

WE IMPLEMENT ARTIFICIAL INTELLIGENCE SIMPLY AND PRAGMATICALLY FOR ALL OUR CUSTOMERS

Why does ADDERS UP want to implement AI in its customers' businesses?

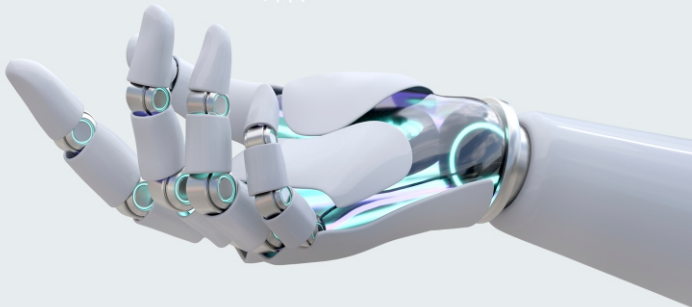
Because it automates processes, improves decision-making, personalizes the customer experience and optimizes operational efficiency.

What is the aim of ADDERS UP? Democratize the use of artificial intelligence

ADDERS UP customers need to be at the cutting edge of technology, and artificial intelligence is a major asset for business competitiveness. Facilitating its use is essential, and ADDERS UP has developed a series of solutions geared towards this goal.

Why are ADDERS UP's AI modules so different?

Because they work with the best AI engines on the market, but using a combination of ALL THE CUSTOMER'S DATABASE ENRICHED BY EXTERNAL DATA SOURCES.



WHY ADDERS UP IS IMPLEMENTING AI IN COMPANIES?

Improved decision-making :

By quickly and accurately analyzing large volumes of data, AI can provide valuable insights for business decision-making.

Marketing and sales optimization:

AI can improve marketing and sales strategies by providing insights into customer preferences and behaviors, as well as automating segmentation and follow-up processes.

Improved operational efficiency:

Implementing AI-based systems can increase operational efficiency by optimizing processes, reducing response times and minimizing human error.

Predictive analysis and risk prevention:

AI can predict future trends and identify potential business risks by analyzing historical data and detecting patterns.

Personalized customer experience:

AI makes it possible to personalize the customer experience by analyzing data and individual behaviors, thereby increasing customer satisfaction and brand loyalty.

Automation of repetitive tasks:

AI automates routine processes and tasks, freeing up time and human resources for more strategic activities.



AI MODULES: ARTIFICIAL INTELLIGENCE - ADDERS UP

THESE ARE "PLUG & PLAY" MODULES THAT CAN BE INTEGRATED INTO THE CUSTOMER'S EXISTING SYSTEMS OR THOSE DEVELOPED BY ADDERS UP.

ADDERS DATA

This is an interface with a "prompt" (a text area where you can interact with the artificial intelligence), integrated into the customer's database, which enables you to converse with the customer's system in real time, as if it were a human being, and query it for operational data or forecasts from the company itself.

ADDERS PERSONAL ASSISTANT

There can be three types of interface, or a combination of all three:

1. "prompt (text box)
2. CHAT BOT on the customer's WEB/APP site
3. Avatar in the customer's Backend/Web/Application

They enable the customer or customers to interact with their system in real time, in the form of a conversation, fully automatically, 24 hours a day, 7 days a week. Our customers thus benefit from an automated customer service system capable of resolving doubts, concluding contracts, making reservations, automating tasks such as creating offers, push notifications, creating content and uploading it to social networks, reading and replying to e-mails, and so on - any task we can imagine.

Simple, with no staff costs, fully automatic and the ability to use the service from any location.





ADDERS UP SOLUTIONS

Our solutions are a set of digital tools, including:

1. An IOS/Android application, available on Apple Store/Google Play with the customer's IMAGE and LOGO.
2. Back-end management for staff.
3. Real-time integration with any customer software and/or external software such as the bank.
4. Possibility of including artificial intelligence tools for data analysis, function automation and automatic personal assistance.
5. Possibility of creating IOS/Android wallets for loyalty cards.

ADDERS UP - MARKET PLACE OF PRODUCTS AND/OR SERVICES ONLINE

Any sector wishing to sell its products or services online: Food, Academies, Supplies, Logistics, Medicine, Legal, Management, Beauty, etc.

Application with interface to products, prices, shopping cart, payment gateway, push notifications; Backend to control purchases, products, users, offer system; Real-time integration with customer software.

Fixed SETUP payment plus monthly server maintenance fee

ADDERS UP - AI ANALYTICS (ARTIFICIAL INTELLIGENCE)

Any company in any sector wishing to analyze its databases for decision-making, forecasting and optimization purposes.

The system is a ChatBot-like tool in human-like conversation that connects to the customer's database, whatever its size and in real time, asks any type of question and also "teaches" your business logic to the AI thanks to the innovative "training" button.

Fixed SETUP payment plus monthly server maintenance fee

ADDERS UP - AI (ARTIFICIAL INTELLIGENCE) PERSONAL ASSISTANT

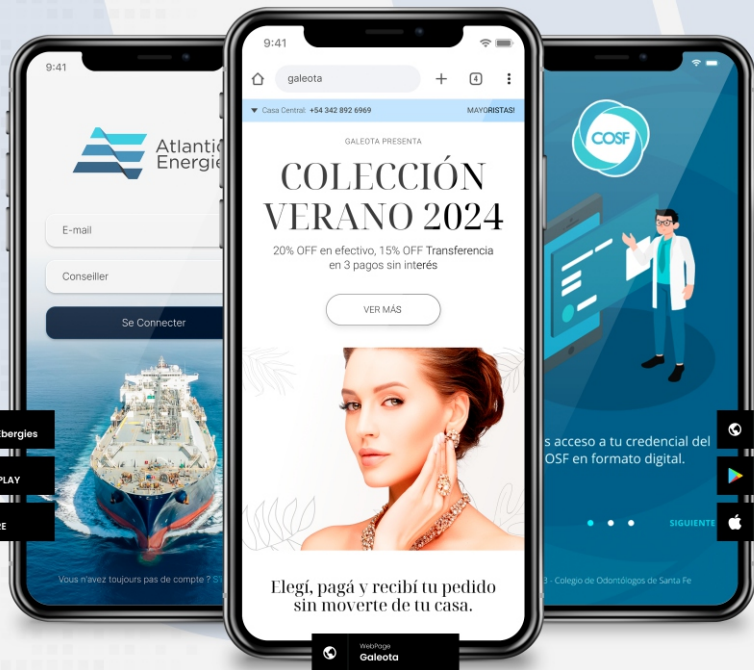
Any company in any sector that needs a personal assistant for its customers or its own staff.

The system is a ChatBot-like tool with human conversation that provides personal assistance for all a company's day-to-day tasks, as well as 24/7 personalized attention to end customers.

Fixed SETUP payment plus monthly server maintenance fee

SOME OF OUR WORK

- Applications IOS/Android
- Web Design and Development
- Integrations with applications and/or platforms of Banking Entities
- Integrations with Government applications and/or platforms gouvernementales.
- Payment gateways
- Wallet IOS/ANDROID
- Artificial Intelligence Modules



WebPage
Atlantic Ebergies

Disponible
GOOGLE PLAY

Disponible
APP STORE

WebPage
COSF

Disponible
GOOGLE PLAY

Disponible
APP STORE

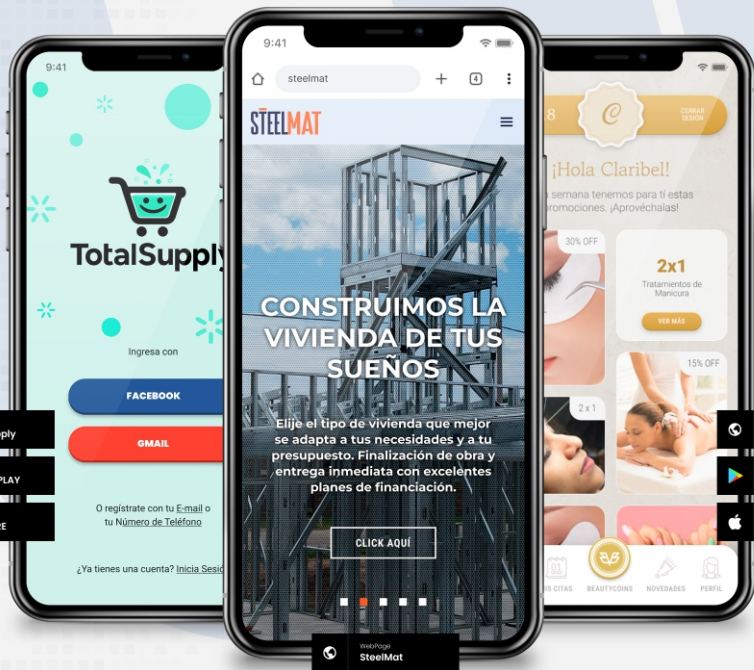
WebPage
Galeota



WebPage
NunaGroup

WebPage
Slam Sports Club

WebPage
Nuna Restó



WebPage
Total Supply

Disponible
GOOGLE PLAY

Disponible
APP STORE

WebPage
Voliò Beauty

Disponible
GOOGLE PLAY

Disponible
APP STORE

WebPage
SteelMat

Logos

A selection of the latest brands.

INDEX
GRÁFICA INTEGRAL

ventafe 
rápido, fácil y seguro



SLAM
SPORTS CLUB



Mirame
LASHES & BROWS

sheko 
GRÁFICA & DISEÑO

ah
AmericanHealthy

 **MYBEAUTER**

Nuna
NUNA HEALTHCARE GROUP


Landes
Cuentamos tu Experiencia




CAESAR'S
MARKET

L'Anima




TotalSupply

NunaGroup
BARCELONA


TOP MUSIC LESSON

PANKO

falcata
ESTRATEGIAS PARA DISEÑAR

addersUP
LINKING BUSINESS

WWW.ADDERSUP.IO

+34 609 404 257

+41 79 908 98 67

jturu@addersup.io

sescoriaza@addersup.io

addersUP
LINKING BUSINESS

WWW.ADDERSUP.IO

Mr. Josep Maria

+34 609 404 257

jturu@addersup.io

Mr. Escoriaza

+41 79 908 98 67

sescoriaza@addersup.io